

## Vacuum valve (Joint) HKSL

Maximum operating pressure: 1.0Mpa

**HANWHA**



Utility

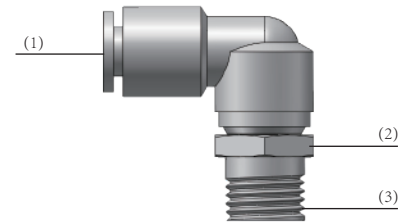
### Product characteristics

- \*Built in bearings for 360 ° high-speed rotation around the central axis
- \*Basic material: copper
- \*Maximum operating pressure: 1.0Mpa, can be used for vacuum systems (vacuum degree below 100kPa)
- \*Suitable hose materials: nylon and PU
- \*Standard type with sealant, M thread with sealing gasket



### Product structure

- \*As an accessory for vacuum sensors
- \*Applicable pipe diameter (1)
- \*Hexagonal opposite side (2)
- \*Connection thread (3)



### Product advantages

- \*Can be directly connected to the vacuum port of the generator
- \*Small size and light weight

#### Rotation force distance/rotation speed

Outer diameter of hose(mm)	Φ4	Φ6	Φ8	Φ10	Φ12
Rotating force distance(N_m)	0.006	0.012	0.014	0.020	0.022
Maximum speed (rpm)	500	500	400	300	250

The surface has been plated and will not interpret copper ions

# Vacuum valve (Joint) HKSL

**HANWHA**



Utility

Maximum operating pressure: 1.0Mpa

## HKSL Ordering NO

HKS	L	04	02	S
1	2	3	4	5

1-Series	
HKS	High speed rotation Joint series

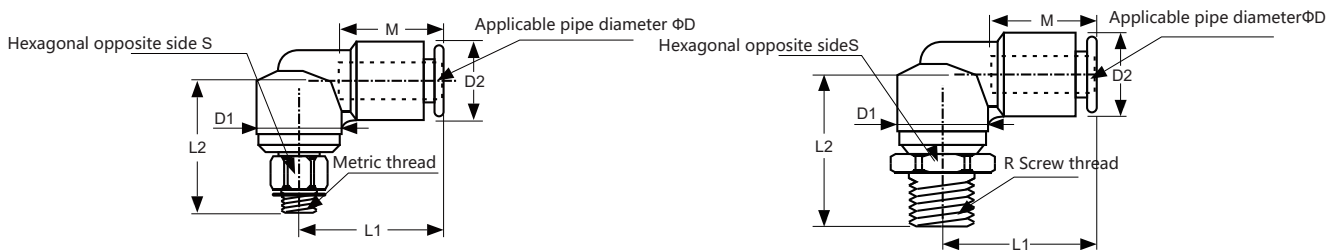
2-Connector	
H	Direct Head
L	Bend joint

3-Caliber	
04	Φ4
06	Φ6
08	Φ8
10	Φ10
12	Φ12

4-Screw thread	
M3	M3X0.5
M5	M5X0.8
M6	M6X1.0
01	1/8"
02	1/4"
03	3/8"
04	1/2"

5-Sealant	
S	Sealant coated (metric) Thread not coated with sealant Add sealing gasket when needed

## HKSL Specification



HKSL

## Vacuum valve (Joint) HKSL

Maximum operating pressure:1.0Mpa

# HANWHA



Utility

Size[mm]								
Models	D	R	S	D1	D2	L	L	N
HKSL-04-M5	Φ4	M5X0.8	8	10.4	12	21	20.5	16
HKSL-04-M6	Φ4	M6X1.0	8	10.4	12	21	21	16
HKSL-04-01S	Φ4	1/8"	12	10.4	12	21	22	16
HKSL-06-M5	Φ6	M5X0.8	8	12.8	14	23	21	17
HKSL-06-M6	Φ6	M6X1.0	8	12.8	14	23	21.5	17
HKSL-06-01S	Φ6	1/8"	14	12.8	14	23	23	17
HKSL-06-02S	Φ6	1/4"	14	12.8	14	23	26	17
HKSL-08-01S	Φ8	1/8"	17	15.2	17	26	26.5	18.5
HKSL-08-02S	Φ8	1/4"	17	15.2	17	26	29.5	18.5
HKSL-08-03S	Φ8	3/8"	17	15.2	17	26	31	18.5
HKSL-10-02S	Φ10	1/4"	22	18.5	22	31.5	34	21
HKSL-10-03S	Φ10	3/8"	22	18.5	22	31.5	35	21
HKSL-10-04S	Φ10	1/2"	22	18.5	22	31.5	38	21
HKSL-12-03S	Φ12	3/8"	24	20.9	24	34	36.5	22
HKSL-12-04S	Φ12	1/2"	24	20.9	24	34	39.5	22