

## Auxiliary components

### Ball joint fixing clip HHTR

Universal fixing clip

**HANWHA**



Utility

#### Product characteristics

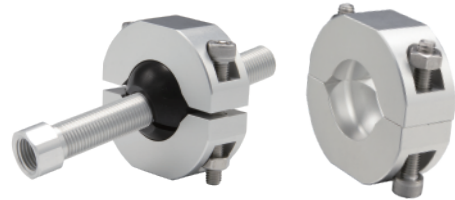
\*Used for installing vacuum elements on existing square or circular tube crossbeams

Universal fixing clip for devices, compatible with various adapter accessories

Used in combination.

\*Adjustable height and angle, flexible adaptation to workpieces, quick replacement and short setting time

\*The vacuum suction cup with a universal fixing clip is flexible and suitable for handling workpieces such as curved metal sheets.



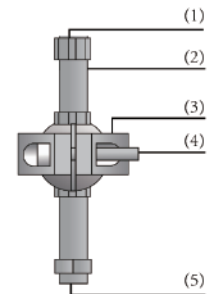
#### Product structure

\*High strength anodized aluminum oxide fixing clip, including fixing clip tube Piece (2), spherical clamp (3), and compatible installation on multiple On square and round tubes.

\*The G1/4 "thread at the bottom of the screw (5) is used to connect the suction

The G1/4 "thread on the upper part (1) of the disc is used to connect the true Empty pipeline or linear vacuum generator.

\*Including fixing screws (4)



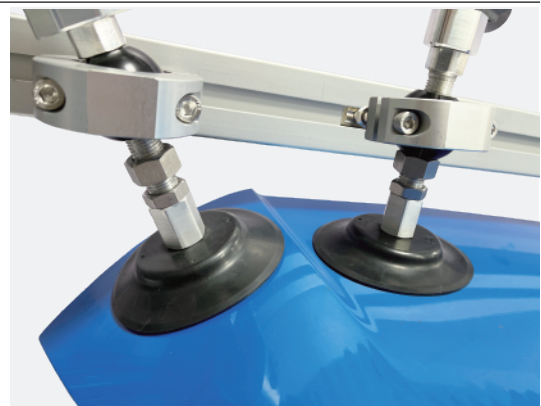
#### Product advantages

\*Spherical clamp structure, quick and easy adjustment and fixation

\*Adjustable height and tilt

\*Applicable for the installation of square and round pipes

\*The vacuum suction cup can be directly installed on the connecting thread



\* HHTR-G02 case

# Auxiliary components

## Ball joint fixing clip HHTR

**HANWHA**



Utility

Universal fixing clip

### HHTR Ordering NO

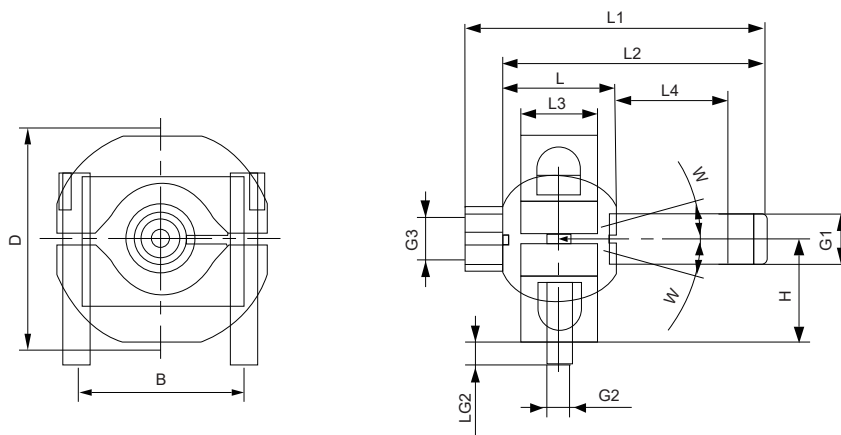
HHTR	—	G02	—	80
1		2		3

1-Series		2-Threaded		3-Length	
HHTR	Attachment	G02	G1/4	80	80mm
				110	110mm
				140	140mm

### HHTR Technical Data

Models	Bridge connection	Connecting threads	Fixed size(mm)
HHTR-G02-80	2 sliders	G1/4	80
HHTR-G02-140	2 sliders	G1/4	140
HHTR-G02-200	2 sliders	G1/4	200

### HHTR Design Data



HHTR-G02

model

Size[mm]	B	D	G1	G2	G3	H	L	L1	L2	L3	LG2	W[°]
HHTR-G02-80	44	59.0	G1/4-M	M6-M	G1/4-F	27.5	30	80	70	20	6	15
HHTR-G02-140	44	59.0	G1/4-M	M6-M	G1/4-F	27.5	30	140	130	20	6	15
HHTR-G02-200	44	59.0	G1/4-M	M6-M	G1/4-F	27.5	30	200	190	20	6	15