

Vacuum Generator

ECG

Maximum vacuum flow: 270~650L/Min



Currency

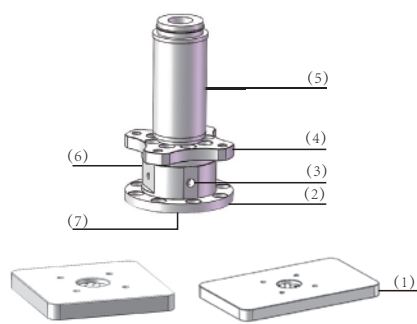
Product characteristics

- * Transportation of perforated circuit boards
- * Handling thin and fragile foil
- * Handling sensitive plastic parts
- * Handling textile or composite fiber materials
- * The adsorption surface is close to the suction port, integrated with vacuum generation function, with large suction volume, low air consumption, and controlled exhaust



Product structure

- * (1) Quickly replace contact surfaces of different shapes
- * (2) Anodized aluminum body with built-in vacuum generator
- * (3) Connector: for the compressed air inlet connector for blowing
- * (4) Axial installation of basic model
- * (5) Exhaust control
- * (6) Vacuum detection port or back purge
- * (7) Real Connection Port



Product advantages

- * Prevent workpieces from being sucked in or damaged, with compact sucker units that can be directly connected, and porous materials that can be safely sucked, with low operating costs and no contamination of the process area



*Vacuum generator ECG assembly

Vacuum Generator

ECG

HANWHA


Currency

Maximum vacuum flow: 270~650L/Min

ECG-10M Ordering NO

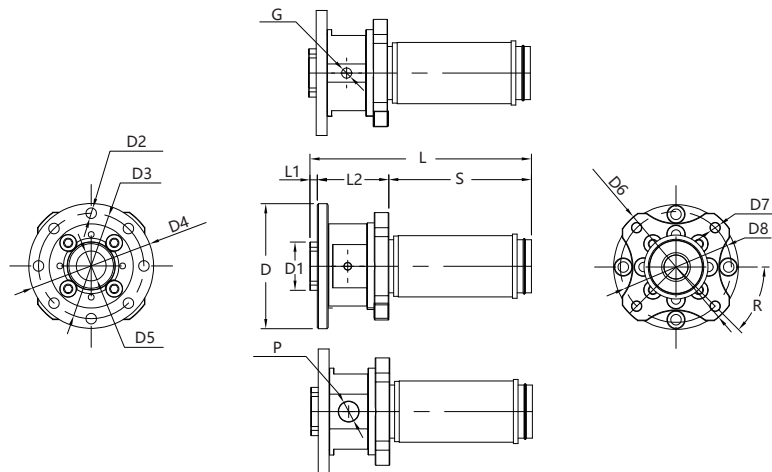
| | |
|-----|-----|
| ECG | 10M |
| 1 | 2 |

| | |
|----------------------|---------|
| 1-Series | 2-Model |
| ECG Vacuum Generator | 10M |

ECG-10M Technical Data

| Models | Use fluid | Temperature [°C] | Inlet pressure [Mpa] | Air consumption [L/Min] | Vacuum pressure reached [-KPa] | Maximum vacuum flow [L/Min] | Weight [Kg] |
|---------|-----------|------------------|----------------------|-------------------------|--------------------------------|-----------------------------|-------------|
| ECG-10M | air | 0~60 | 0.1~0.5 | 60~200 | 14 | 270~650 | 0.14 |

ECG-10M Design Data



ECG-10M

Size[mm]

| Models | L | L1 | L2 | D | D1 | D2 | D3 | D4 | D5 | D6 | D7 | D8 | G | R | P | S |
|---------|----|----|------|-----|-----|--------|-------|-------|-------|-------|--------|-----|----|------|-------|-----------|
| ECG-10M | 92 | 3 | 29.6 | φ52 | φ20 | 8-φ4.4 | φ43.7 | φ51.8 | φ12.5 | φ54.8 | 4-φ4.1 | φ46 | M5 | 45°C | G1/8" | Silencing |