

Vacuum Generator HCV

HANWHA



Currency

Maximum vacuum flow:-35Kpa

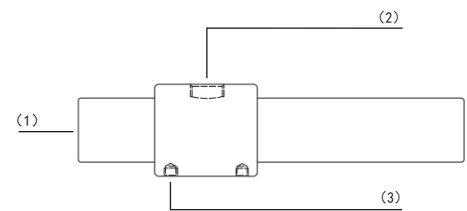
Product characteristics

- *Direct through structure, which can provide high vacuum flow rate
- *Multiple diameter specifications to meet different needs, with a maximum vacuum degree of 35-kPa



Product structure

- *Main body: straight through structure, capable of continuously absorbing and transporting materials
- * (1) Connector: Compressed air connector for blowing air
- * (2) Vacuum connection port
- * (3) Equipped with installation threaded port



Product advantages

- *Stable efficiency, energy-saving and efficient, simplified installation and easy maintenance
- *Can transport highly breathable workpieces, conveying fluid materials such as particles, powders, gases, liquids, etc



*Example of vacuum generator HCV suction for food packaging bags

Vacuum Generator

HCV

HANWHA


Currency

Maximum vacuum flow:-35Kpa

HCV Ordering NO

HCV	2	S
1	2	3

1-Series		2-Specifications	
HCV	Vacuum generator	2	Nozzle diameter 6.5mm
		3	Nozzle diameter 9.5mm
		5	Nozzle diameter 12.5mm
		7	Nozzle diameter 19mm
3-Material		15-1	Nozzle diameter 25mm
S	Aluminium alloy	15-2	Nozzle diameter 38mm
	Stainless steel		

HCV Technical Data

Model	Nozzle diameter mm	Temperature [°C]	Rated gas supply pressure [bar]	Gas consumption [L/Min]	Reaching vacuum pressure [-KPa]	Maximum vacuum flow rate [L/Min]	Weight [Kg]	Weight S [Kg]
HCV-2	6.5	-20~80 (No freeze)	6.0	85	26.0	295	0.09	0.3
HCV-3	9.5	-20~80 (No freeze)	6.0	95	16.0	425	0.07	0.2
HCV-5	12.5	-20~80 (No freeze)	6.0	395	35.0	870	0.17	0.5
HCV-7	19.0	-20~80 (No freeze)	6.0	790	28.0	1825	0.39	1.2
HCV-15-1	25.0	-20~80 (No freeze)	6.0	405	4.4	4400	0.52	1.5
HCV-15-2	38.0	-20~80 (No freeze)	6.0	790	9.0	5610	0.66	2.0

Vacuum Generator HCV

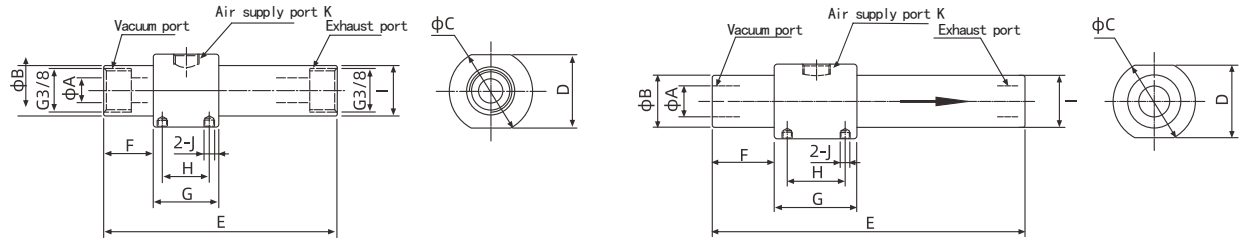
HANWHA



Currency

Maximum vacuum flow:-35Kpa

HCV Design Data



HCV

Size[mm]

Models	A	B	C	D	E	F	G	H	I	J	K
HCV-2	6.5	18.5	32	28	89	19	25	18	19.5	M4	G1/8
HCV-3	9.5	18.5	32	58	89	19	25	18	19.5	M4	G1/8
HCV-5	12.5	24.0	38	34	140	25	32	23	25.0	M4	G1/4
HCV-7	19.0	31.0	50	45	190	38	50	35	33.0	M4	G3/8
HCV-15-1	25.0	38.0	59	55	198	40	56	40	38.0	M4	G3/8
HCV-15-2	38.0	49.6	69	65	205	40	60	42	49.6	M4	G3/8