

Suction Cups

HPS

Corrugated suction cup at skirt edge

HANWHA



Plastic bag



Glass



Materials Deformability



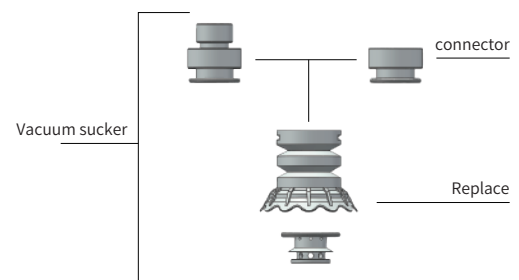
Product characteristics

- * Reinforced body, 1.5 times for safe grip and stability even at high speeds
- * Large nominal flow rate enables high flow rate and short cycle time
- * Circular bellows suction cup, 1.5x, very flexible handling of bags and other types of packaging reliably grabs and handles bags containing liquids, solids or powders as well as packages that are not very full



Product structure

- * 1.5 fold skirt suction cup, soft flexible sealing lip, with segmented flow vane and integrated bag stabilizer
- * Installation using connecting elements; Or connect directly to the pipe via hose clamps all externally threaded connection elements are equipped with integrated seals
- * Optional plug-in filter for pre-filter



Product advantages

- * Very large shaft diameter, large flow
- * Specially reinforced suction bellows for improved stability
- * Silicone SI that meets FDA standards allows direct contact with food
- * Integrated bag stabilizer prevents film and film from being pulled in



Suction Cups

HPS

Corrugated suction cup at skirt edge

HANWHA



Plastic bag



Glass



Materials Deformability



HPS Ordering NO

HPS	35	FG02	SI
1	2	3	4

1-Series	2-Diameter	3-Crew thread
HPS	Suction Cup	35
		35mm
		F Internal thread
		M External thread
		G02-G1/4
		G02-G1/4

4-Material ⁽¹⁾	
SI	Food grade silicone (transparent)
SI-RR	High performance (pink)

(1)Other materials can also be made, please contact us



HPS Selection specification

Models	F-G02-G1/4	M-G02-G1/4
HPS35	◎	◎



HPS Technical Data

Models	Diameter[mm]	Number of folds
HPS-35	35	1.5



Suction Cups

HPS

Corrugated suction cup at skirt edge

HANWHA



Plastic bag



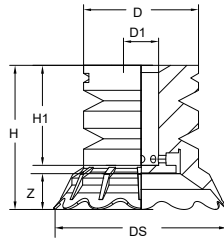
Glass



Materials Deformability



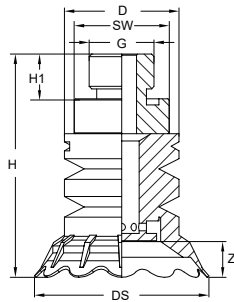
HPS35 Design Data



Size[mm]⁽³⁾

Models	D	H	H1	D1	DS	Z	Weight[g]
HPS35	23	29	20	7	35	7	4.57

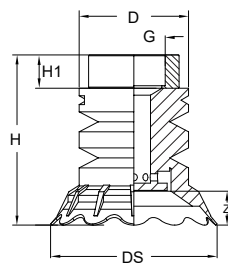
HPS35 Dimension



Size[mm]⁽³⁾

Models	D	H	H1	G	DS	SW	Z	Weight[g]
HPS35-MG02	23	45	9	G1/4"	35	19	7	11.56

HSB35 External thread



Size[mm]⁽³⁾

Models	D	H	H1	G	DS	SW	Z	Weight[g]
HPS35-FG02	23	36	7	G1/4"	35	19	7	7.92

HSB35 Internal thread

(3) Compliant with DIN ISO 3302-1 M3 rubber parts allowable dimensional tolerances. Z is the trip