

## Suction Cups

### HSC

2.5 fold corrugated suction cup

**HANWHA**



Packing



Plastic



Electronics

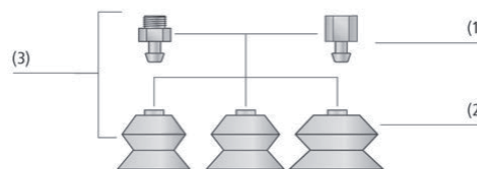
### Product characteristics

- \*Handling fragile and vulnerable workpieces, such as electronic components, injection molded parts, etc
- \*The best fit for handling workpieces with flat or uneven surfaces, such as cardboard boxes, pipes, etc
- \*Wide size range
- \*The suction cup with a diameter of 52mm and above is equipped with a supporting structure inside, which can prevent the workpiece from being sucked in
- \*The suction cup is soft and can be customized with multiple materials



### Product structure

- \*Durable and wear-resistant 2.5-fold corrugated suction cup HSC (3), with special grooves and internal support structure
- \*The suction cup has multiple connection forms to choose from (1)
- \*Multiple sizes and materials of suction cups are available (2)



### Product advantages

- \*Suitable for workpieces of different shapes and sizes
- \*Strong adaptability to uneven surface workpieces
- \*Compensating for height differences in workpieces, providing good cushioning performance when in contact with workpieces
- \*Handling thin-walled workpieces will not cause permanent deformation



\*HSC handling large packaging

## Suction Cups

### HSC

2.5 fold corrugated suction cup

## HANWHA



Packing



Plastic



Electronics



### HSC Ordering NO

HSC	3	FG02	NBR
1	2	3	4

1-Series	2-Diameter	3-Crew thread	4-Material <sup>(1)</sup>
HSC	Suction Cup	3~88	φ3~88mm
		F Internal thread	G02-G1/4
		M External thread	M3
			M5
			G01-G1/8
			G02-G1/4
			G03-G3/8
SI	Silicon rubber		
SI-W	Anti static (white)		
NBR	Nitrile rubber		
NBR-B	Anti static (black)		
H1	High temperature material(blue)		
H2	High temperature material(black)		

(1)Other materials can also be made, please contact us



### HSC Model Selection

Models	F-G02-G1/4	M3	M5	M-G01-G1/8	M-G02-G1/4	M-G03-G3/8
HSC3		⊙	⊙			
HSC4			⊙			
HSC5			⊙			
HSC7			⊙			
HSC9			⊙			
HSC12				⊙		
HSC14				⊙		
HSC18				⊙		
HSC20				⊙		
HSC25				⊙		
HSC32	⊙				⊙	
HSC42	⊙				⊙	
HSC52	⊙				⊙	
HSC62	⊙				⊙	
HSC88						⊙



# Suction Cups

## HSC

2.5 fold corrugated suction cup

**HANWHA**



Packing



Plastic



Electronics



### HSC Technical Data

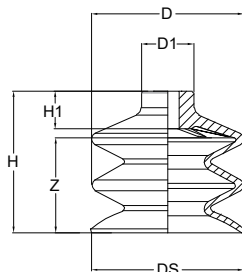
Models	Suction[N] <sup>(2)</sup>		Internal volume [cm <sup>3</sup> ]
	-60Kpa	-60Kpa	
HSC3	0.2	0.4	0.02
HSC4	0.3	0.6	0.05
HSC5	0.2	0.8	0.03
HSC7	0.1	0.9	0.04
HSC9	0.7	2.3	0.2
HSC12	0.9	3.5	0.6
HSC14	1.2	5.7	1.0
HSC18	2.3	8.5	1.4
HSC20	3.8	12.1	2.0
HSC25	4.5	19	5.4
HSC32	12	36.9	10
HSC42	13.6	44	20
HSC52	27	96	38
HSC62	39.6	137	73
HSC88	45.2	286	144

(2) The measured surface of the workpiece is smooth and dry, with a vacuum degree of -60KPa.

The above data does not include the safety factor. The values may vary depending on the surface condition of the workpiece.



### HSC 3~88 Design Data



Size[mm]<sup>(3)</sup>

Models	D	H	H1	DS	D1	Z	Weight [g]
HSC-3	3	6.7	2	3	3.6	3.3	0.03
HSC-4	5	14	4	3.8	7	4.7	0.33
HSC-5	6	14	8	5	7	5.2	0.36
HSC-7	6	12	5	6.5	7.5	6.6	0.23
HSC-9	9	14.7	8	8.8	9.2	5	0.72
HSC-12	12	21	7	11.2	12	11	1.28
HSC-14	14	23	7	14	10	13	1.42
HSC-18	18	23	7	17.5	10	13	1.92
HSC-20	20	22	8	20	10	13	2
HSC-25	25	34.5	9	25	10	21.5	4.64
HSC-32	32	38	14	32	18	20	9.57
HSC-42	44	48	13	43	19	30	22.46
HSC-52	52	48	13	52	18	32	30.5
HSC-62	62	55	13	62	21	32.5	39.2
HSC-88	88	86.3	24	87.5	25	52.4	165.7

#### HSC3~88 Dimension

(3) Compliant with DIN ISO 3302-1 M3 rubber parts allowable dimensional tolerances. Z is the trip



[www.vhhtc.com](http://www.vhhtc.com)

# Suction Cups

## HSC

2.5 fold corrugated suction cup

**HANWHA**



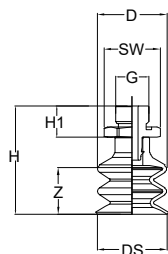
Packing



Plastic



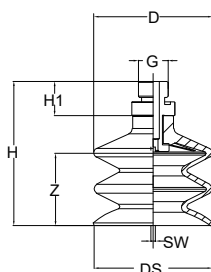
Electronics



HSC3~25 External thread

Size[mm]<sup>(3)</sup>

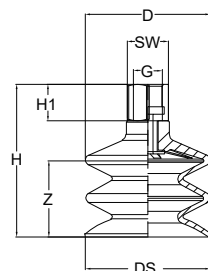
Models	D	H	H1	G	DS	SW	Z	Weight [g]
HSC3-M3-M	3	13.7	7	M3	3	SW5	4	0.24
HSC3-M5-M	3	15.2	8.5	M5	3	SW8	5.8	0.88
HSC4-M5-M	5	22.5	8.5	M5	3.8	SW8	7.6	1.18
HSC5-M5-M	6	22.5	8.5	M5	5	SW8	9.4	1.21
HSC7-M5-M	6	20.5	8.5	M5	6.5	SW8	7.6	1.08
HSC9-M5-M	9	23.5	8.5	M5	8.8	SW8	9.4	1.57
HSC12-MG01	12	30	9	G1/8"	11.2	SW14	7	3.6
HSC14-MG01	14	32	9	G1/8"	14	SW14	6	3.74
HSC18-MG01	18	32	9	G1/8"	17.5	SW14	14.5	4.24
HSC20-MG01	20	31	9	G1/8"	20	SW14	7	4.32
HSC25-MG01	25	43.5	9	G1/8"	25	SW14	10.5	6.96



HSC32~88 External thread

Size[mm]<sup>(3)</sup>

Models	D	H	H1	G	DS	SW	Z	Weight [g]
HSC32-MG02	32	52.5	14	G1/4"	32	SW4	10	17.07
HSC42-MG02	44	62.5	13	G1/4"	43	SW4	10	29.96
HSC52-MG02	52	63.3	13	G1/4"	52	SW4	14.3	38
HSC62-MG02	62	70	13	G1/4"	62	SW4	16.8	46.7
HSC88-MG02	88	102.3	24	G3/8"	87.5	SW4	21.5	173.2



HSC32~62 Internal thread

Size[mm]<sup>(3)</sup>

Models	D	H	H1	G	DS	SW	Z	Weight [g]
HSC32-FG02	32	52.5	15.2	G1/4"	32	SW17	10	17.27
HSC42-FG02	44	62.7	15.2	G1/4"	43	SW17	10	30.16
HSC52-FG02	52	63.5	15.2	G1/4"	52	SW17	14.3	38.2
HSC62-FG02	62	70.2	15.2	G1/4"	62	SW17	16.8	46.9

(3) Compliant with DIN ISO 3302-1 M3 rubber parts allowable dimensional tolerances. Z is the trip